

Luci[®]
by MPOWERD[™]
www.mpowerd.com

INFLATABLE SOLAR LIGHT
USER MANUAL

Luci[®] ORIGINAL

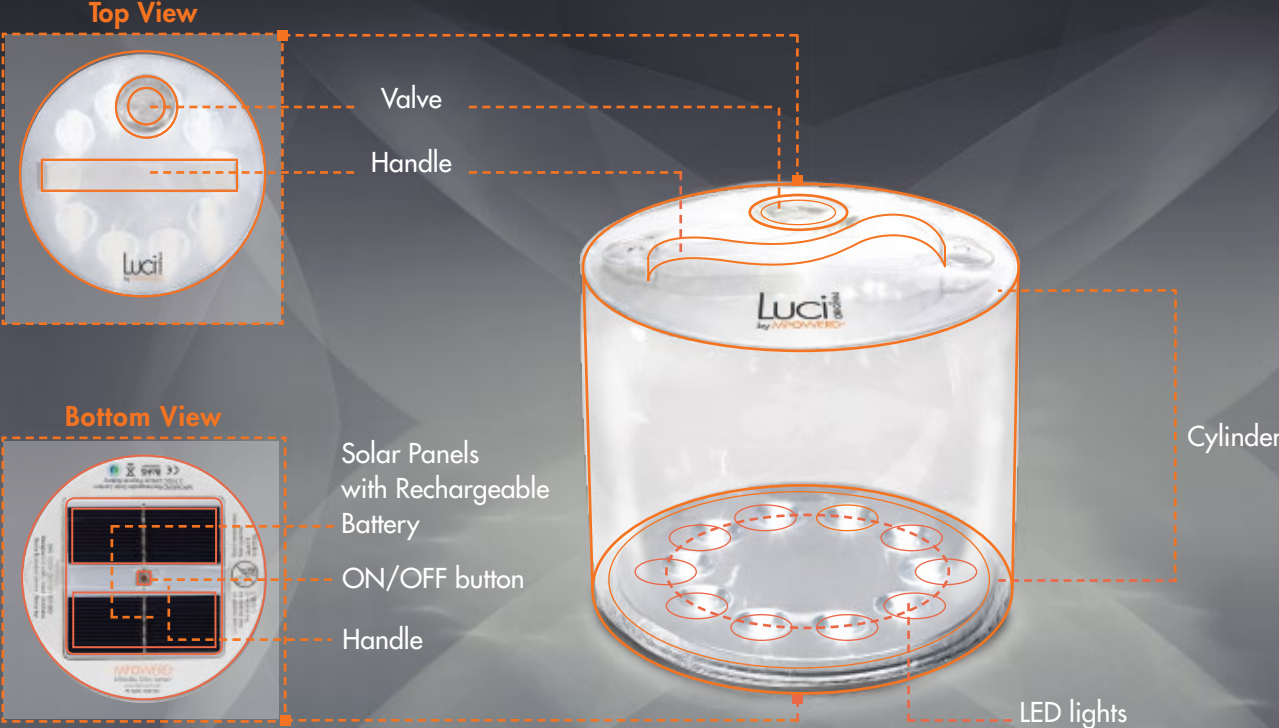
Luci[®] X

Luci[®] AURA

Luci[®] EMRG



PRODUCT COMPONENTS



HOW YOUR LUCI WORKS

1

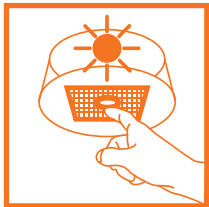


To turn your Luci on, press the ON/OFF button

3

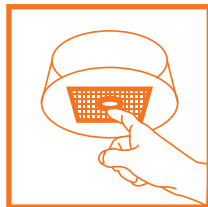


Press three times for emergency flashing



Press once for bright lighting

4



* Press a fourth time to turn off

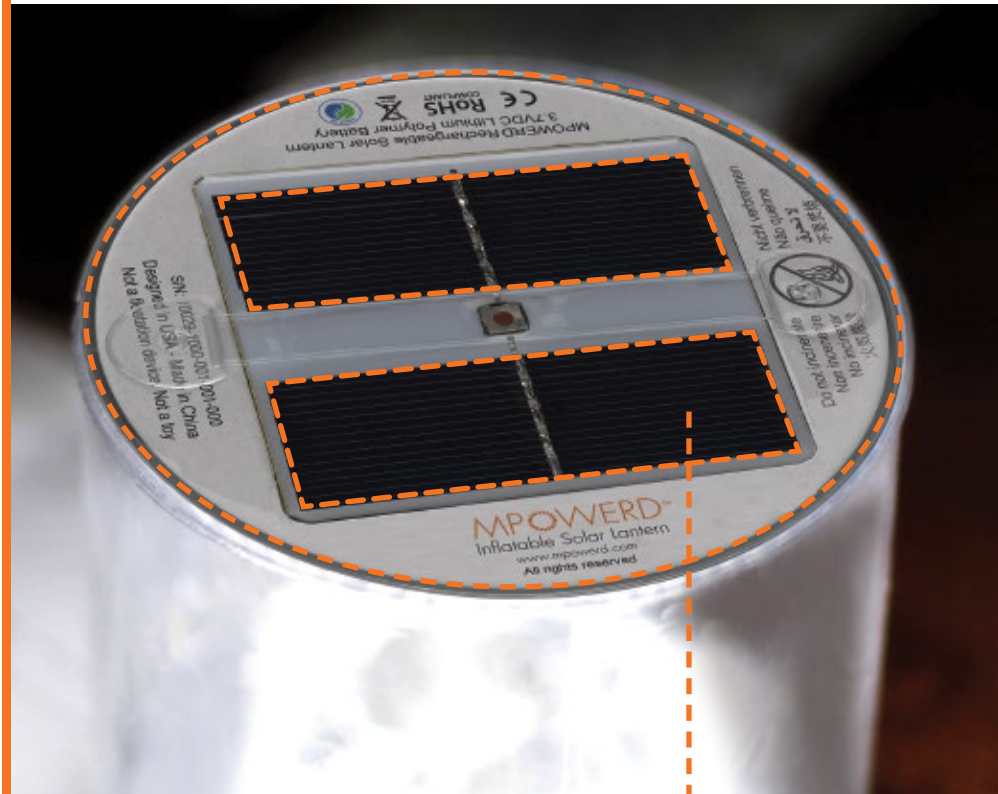
2



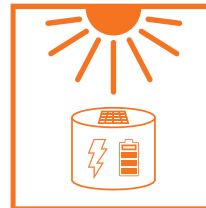
Press twice for super bright lighting

* Instructions may vary for each Luci model. To reach the desired setting, please press the power button per order listed on the packaging.

HOW TO CHARGE YOUR LUCI



Sunlight

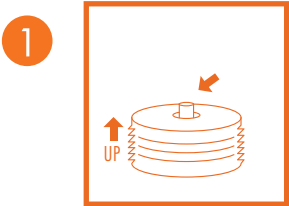


charging time
8 hours

A Luci can be charged in both direct sunlight and incandescent light. Turn the unit over (solar panel side up) under direct sunlight or incandescent light to allow it to charge properly.

Note: Charging time may vary due to environmental conditions and age of lantern.

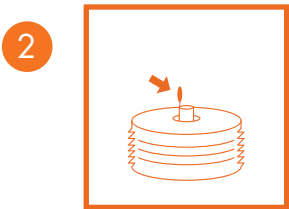
HOW TO INFLATE YOUR LUCI



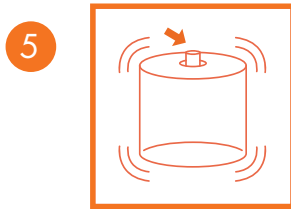
1 Make sure Luci is facing upward, (valve on top, battery on bottom)



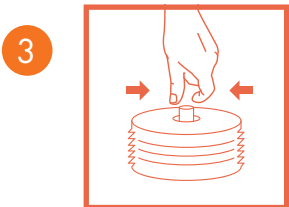
4 Once space has been created, blow on the valve while continuing to pinch on the base until fully inflated



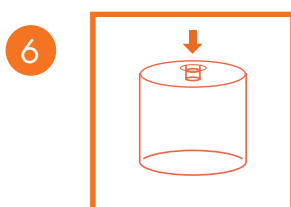
2 Open valve



5 Close valve

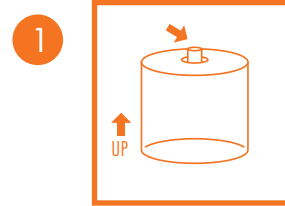


3 Pinch valve labelled "SQUEEZE HERE" and pull apart with both hands to begin inflating

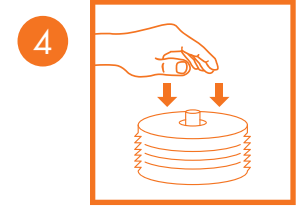


6 Push valve down

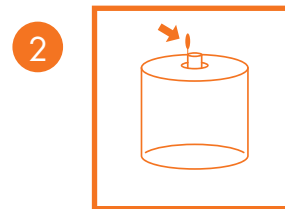
HOW TO DEFLATE YOUR LUCI



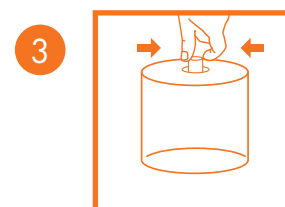
1 Make sure Luci is facing upward (valve on top, battery on bottom)



4 Continue to apply pressure until Luci is fully deflated



2 Open valve



3 Squeeze the base of the valve while pulling down to begin deflating Luci

FREQUENTLY ASKED QUESTIONS

How does Luci work?

Luci has three main components (1) Two solar panels that capture photons from sunlight or incandescent light; (2) a rechargeable internal battery that stores its power; and (3) LED bulbs that produce its light.

Does a Luci need any additional parts, such as batteries or a charger?

No – unlike other solar lights, a Luci does not require any additional parts, since its unit contains solar PV cells, a battery and LED lights all in one.

How does a Luci charge?

A Luci's solar panels charge when facing sunlight or incandescent light. In direct sunlight, Luci will charge fully in 8 hours. A Luci will charge even when it's cloudy outside, but it will take longer. To charge Luci in incandescent light, place the solar panels close to the light bulb – but not so close that it becomes hot. It will take longer than 8 hours to charge under incandescent light.

How long does Luci stay illuminated after one full charge?

Setting a Luci on the lowest light setting provides light for up to 12 hours after a full charge. Note: lighting time may vary by Luci model.

How long does a Luci last?

Luci has 300 – 3,000 cycles of full charge depending on the model, so the length of time it lasts depends on frequency of use. If the unit is fully charged and fully discharged every single day, a Luci lasts approximately 2-10 years, depending on the model. If used less frequently, it will last for many years.

How much light does a Luci produce?

Luci delivers up to 30 – 50 lumens of light depending on the model - illuminating an area of about 100-150 square feet (or approx. 9 – 14 square meters).

If Luci is kept in an emergency supply kit, how often should it be recharged?

When not in use, a Luci holds a full charge for about three months. After that, it retains up to 50% of its charge for two years.

What is the life span of Luci's LED lights?

The industry standard for LED light bulbs is at least 25,000 hours. The LEDs will not burn out during the life of a Luci light.

Can Luci be kept outside?

Yes – despite its elegant, minimalist design, a Luci can withstand extreme temperatures, wind, and rain. A Luci light operates in temperatures ranging from 15°F to 122°F (-10°C to 50°C).

From what should I protect my Luci light?

Do not use your Luci near a fire or expose it to sharp objects to prevent it from melting or being punctured.

Is there any risk of electric shock or burns from Luci?

No – there is no risk of electric shock or burns from a Luci solar light.

I am having trouble inflating Luci. What can I do?

Luci has been developed with a special valve to prevent air leaking out through the inflation valve. In order to inflate your Luci, this valve must be pinched to let air through. The valve can be pinched with your fingers or your teeth while blowing into the unit. To deflate the Luci, pinch the valve again while compressing Luci to let air escape.